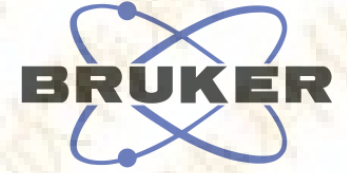


S20120608-063
20120608
PROTON CDCl3 D:\nmr_data ham

www.syntechem.com

7.284

4.173
4.161
4.149
3.795
3.763
2.971
2.960
2.946
2.933
2.917
2.906
2.885
2.875
2.779
2.748
2.703
2.692
2.671
2.662
1.806
1.462
1.222
1.205

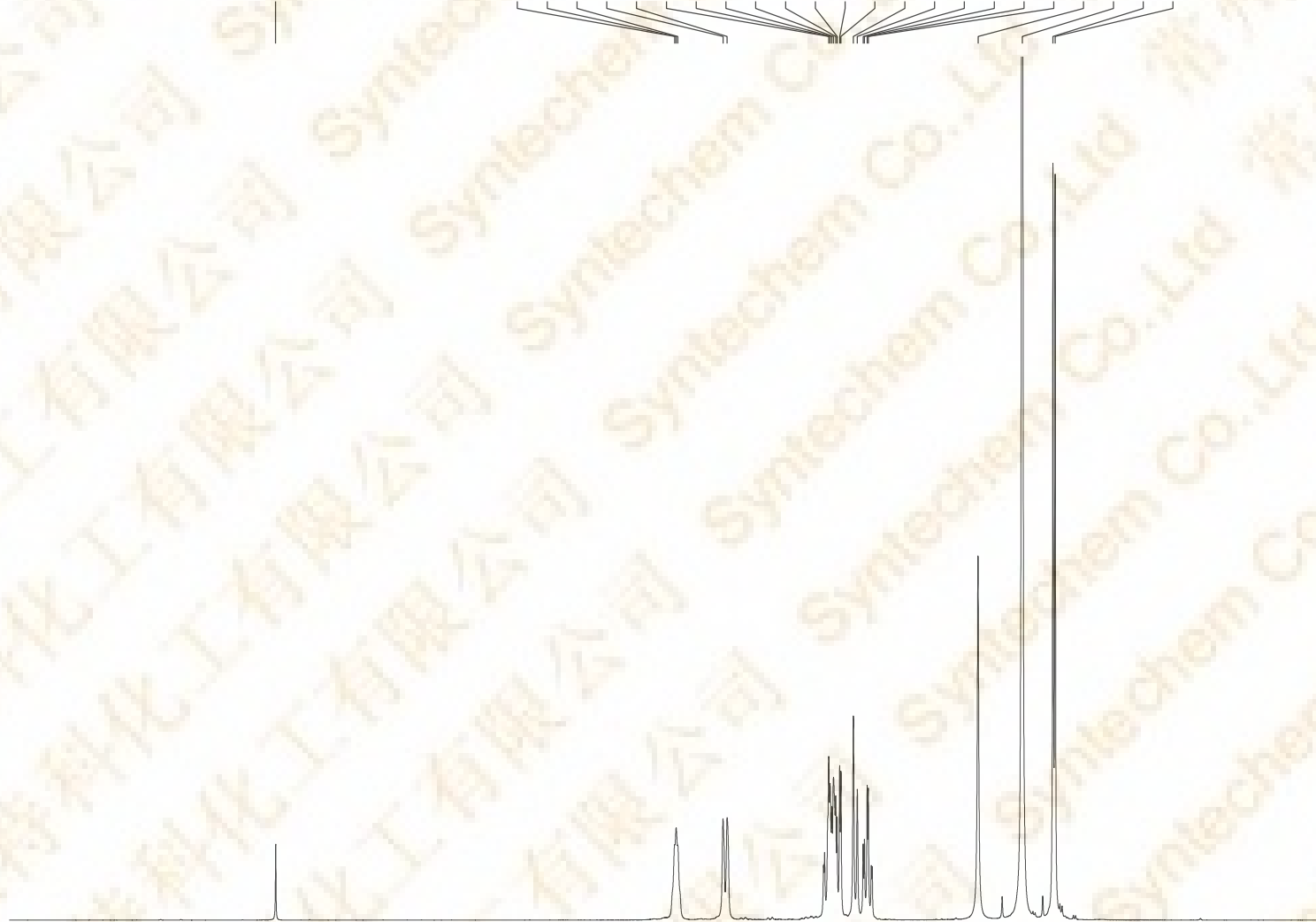


Current Data Parameters
NAME 2012-6-8-4
EXPNO 10
PROCNO 1

F2 - Acquisition Parameters
Date_ 20120608
Time 13.34
INSTRUM spect
PROBHD 5 mm PABBO BB-
PULPROG zg30
TD 65536
SOLVENT CDCl3
NS 16
DS 2
SWH 8223.685 Hz
FIDRES 0.125483 Hz
AQ 3.9846387 sec
RG 71.8
DW 60.800 usec
DE 6.50 usec
TE 298.0 K
D1 1.00000000 sec

==== CHANNEL f1 =====
NUC1 1H
P1 14.50 usec
PLW1 12.85299969 W
SFO1 400.1324710 MHz

F2 - Processing parameters
SI 65536
SF 400.1300000 MHz
WDW EM
SSB 0
LB 0.30 Hz
GB 0
PC 1.00



9 8 7 6 5 4 3 2 1 0 ppm

0.96
0.99
2.97
0.99
0.99
9.00
2.89