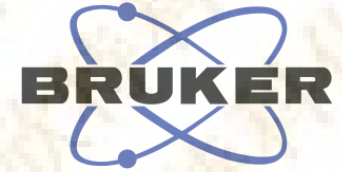


S20120308-022  
20120308  
PROTON CDCl3 D:\nmr\_data ham

7.867  
7.848  
7.830  
7.518  
7.501  
7.484  
7.283  
7.204  
7.184  
7.164

2.392  
2.386

0.006

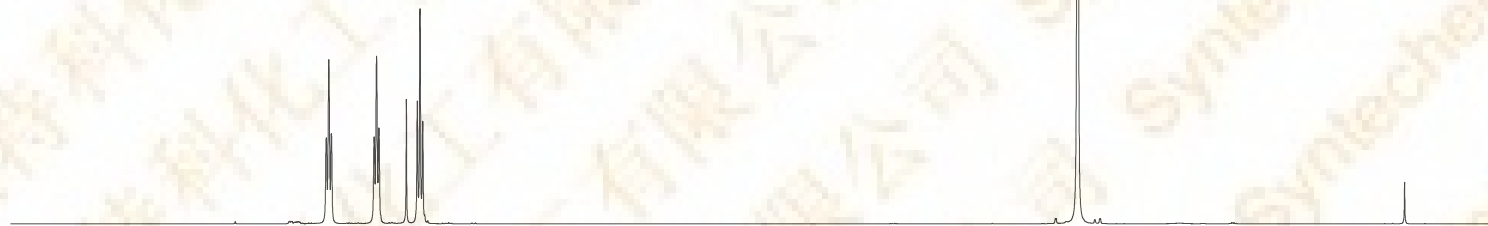


Current Data Parameters  
NAME 2012-03-8-1  
EXPNO 10  
PROCNO 1

F2 - Acquisition Parameters  
Date\_ 20120308  
Time 11.48  
INSTRUM spect  
PROBHD 5 mm PABBO BB-  
PULPROG zg30  
TD 65536  
SOLVENT CDCl3  
NS 16  
DS 2  
SWH 8223.685 Hz  
FIDRES 0.125483 Hz  
AQ 3.9846387 sec  
RG 64  
DW 60.800 usec  
DE 6.50 usec  
TE 298.0 K  
D1 1.00000000 sec

==== CHANNEL f1 =====  
NUC1 1H  
P1 14.50 usec  
PLW1 12.85299969 W  
SFO1 400.1324710 MHz

F2 - Processing parameters  
SI 65536  
SF 400.1300000 MHz  
WDW EM  
SSB 0  
LB 0.30 Hz  
GB 0  
PC 1.00



10 9 8 7 6 5 4 3 2 1 0 ppm

0.99  
1.00  
1.03

3.14